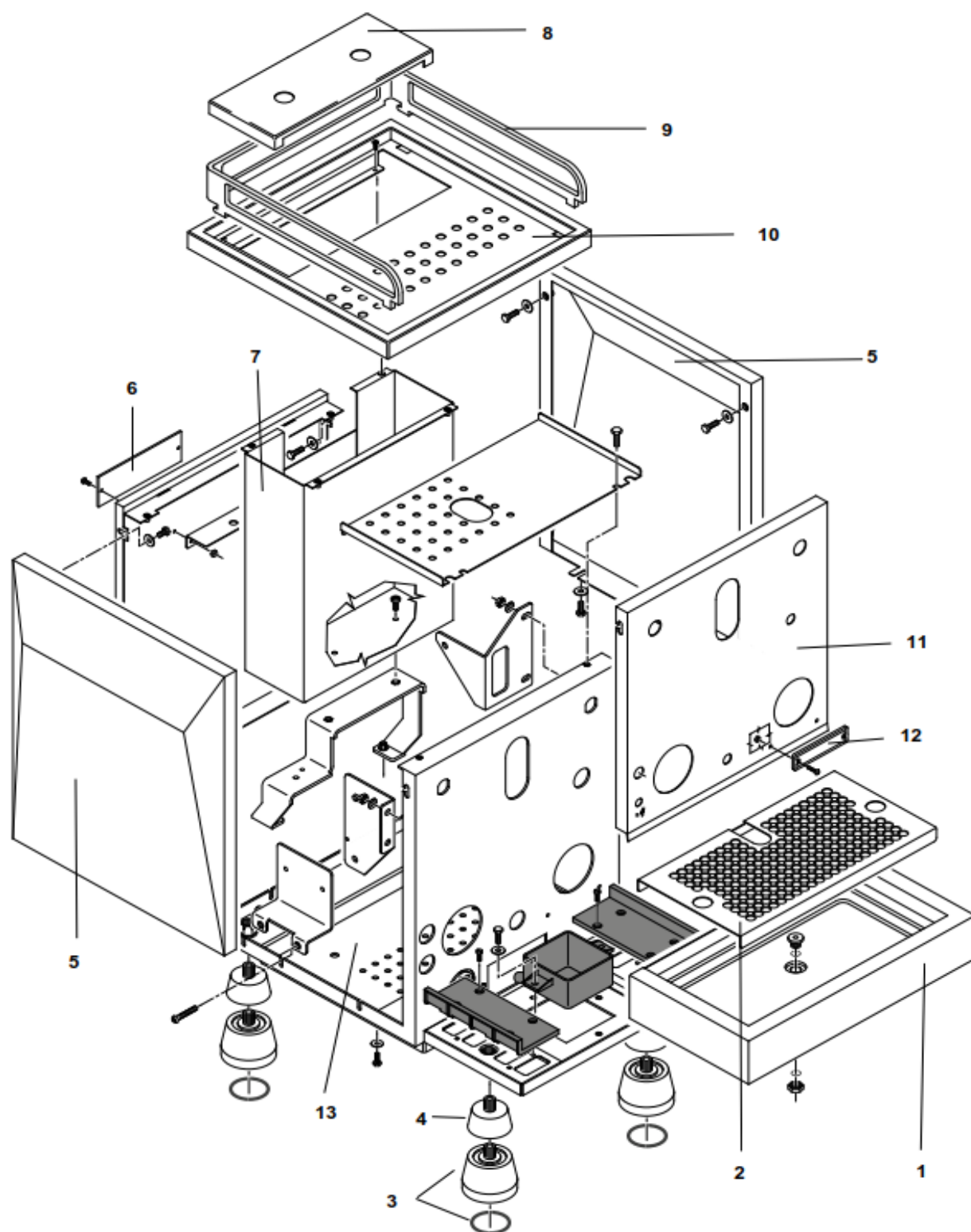
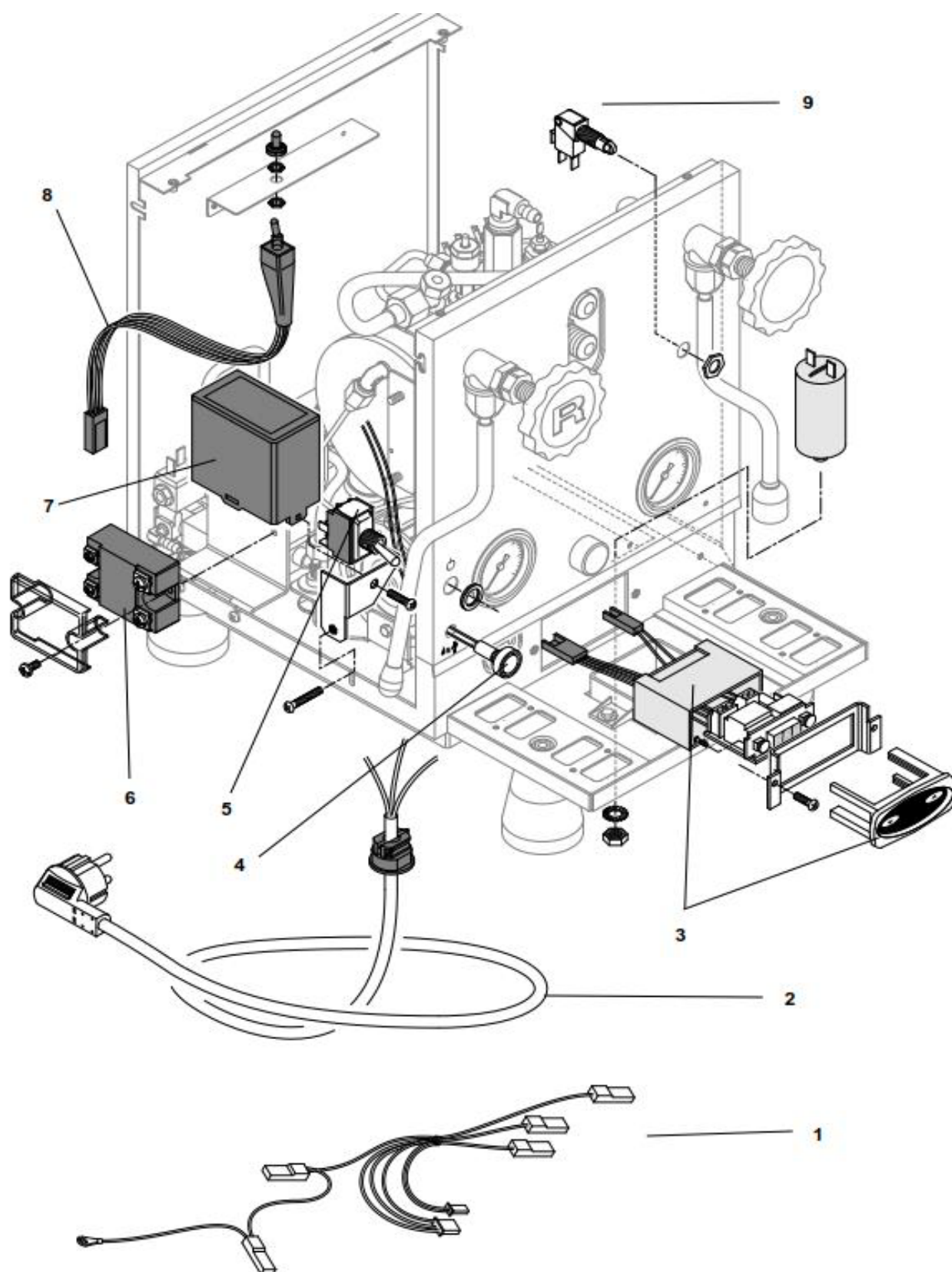


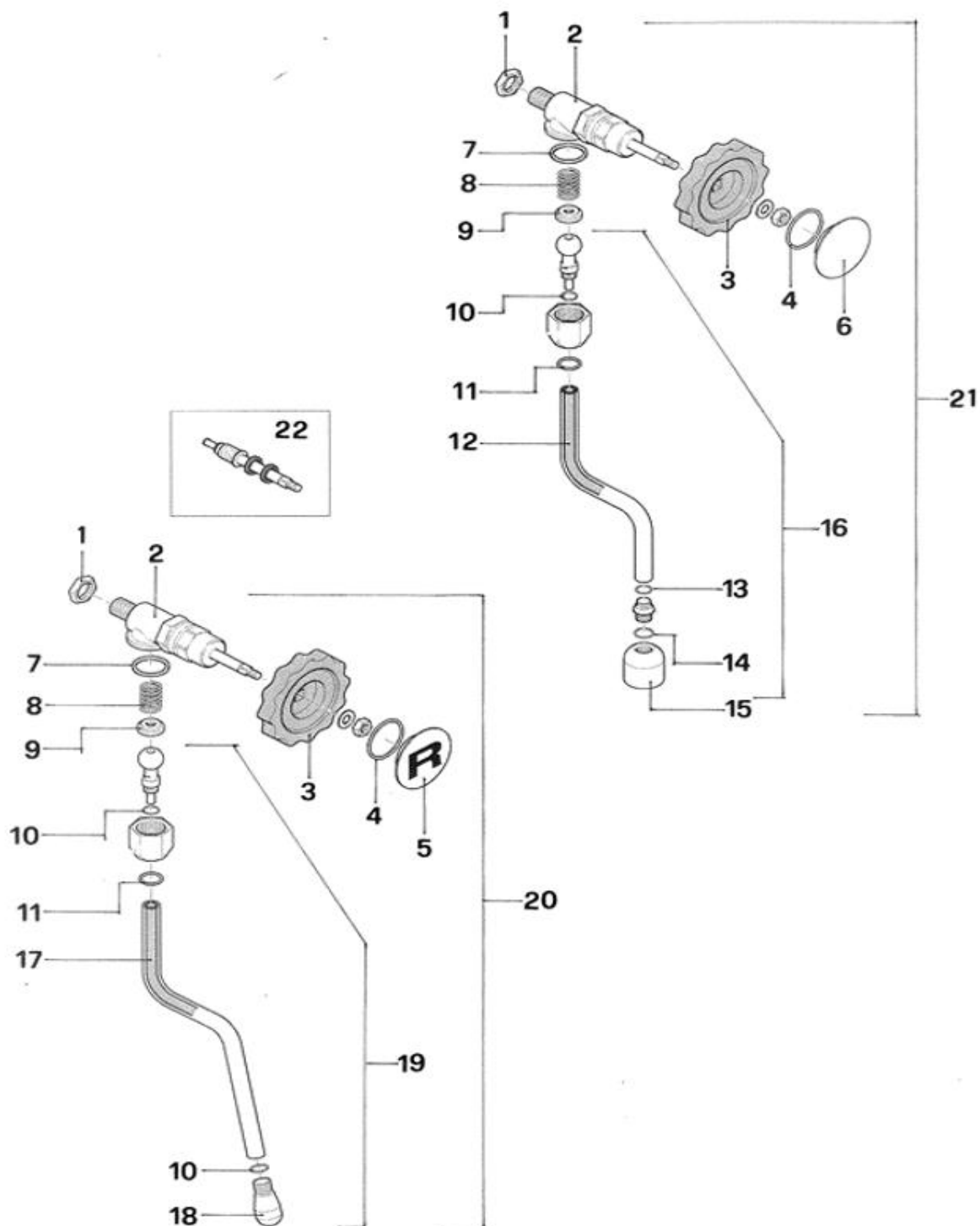
Pos.	#	Description	Notes
1	R01L005125	Drip tray	
2	A019904346	Grid	
3	A059906054	Foot with silicone O-ring	
4	A009906042	Chassis	
5	A019904656	Tank guide	
6	A057706052	Left side panel chrome	
	A05B706052	Left side panel black	
	A05W706052	Left side panel white	
7	A059906053	Bar	
8	A859904400	Rear tag	
9	C01L004255	Rear panel chrome	
	C01B004255	Rear panel black	
	C01W004255	Rear panel white	
10	A019906050	Cover	
11	R01L000382	Reservoir cover	
12	A057706051	Right side panel chrome	
	A05B706051	Right side panel black	
	A05W706051	Right side panel white	
13	A19I004629	Front panel	
14	A859906121	Front tag	



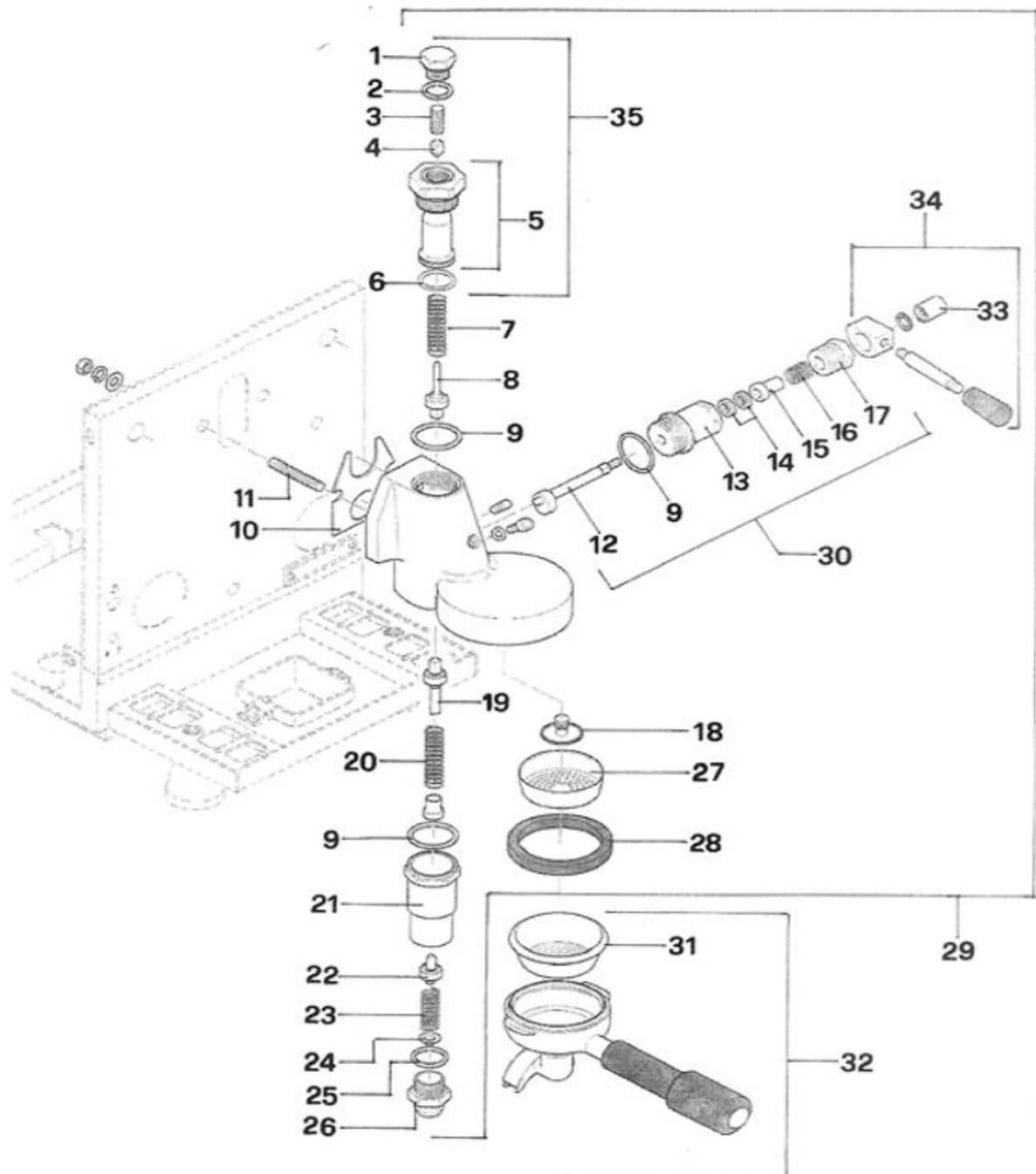
Pos.	#	Description	Notes
1	R01L005125	Drip tray	
2	A019904346	Grid	
3	A059906054	Foot with silicone O-ring	
4	A059906073	Foot extension	
5	A019906043	Side panel stainless steel	
6	A859904400	Rear tag	
7	A019904656	Tank guide	
8	R01L000382	Reservoir cover	
9	A999904597	Cups frame stainless steel	
10	C01L004246	Cover	
11	A01I004629	Front panel	
12	A859906123	Front tag	
13	A009906042	Chassis	



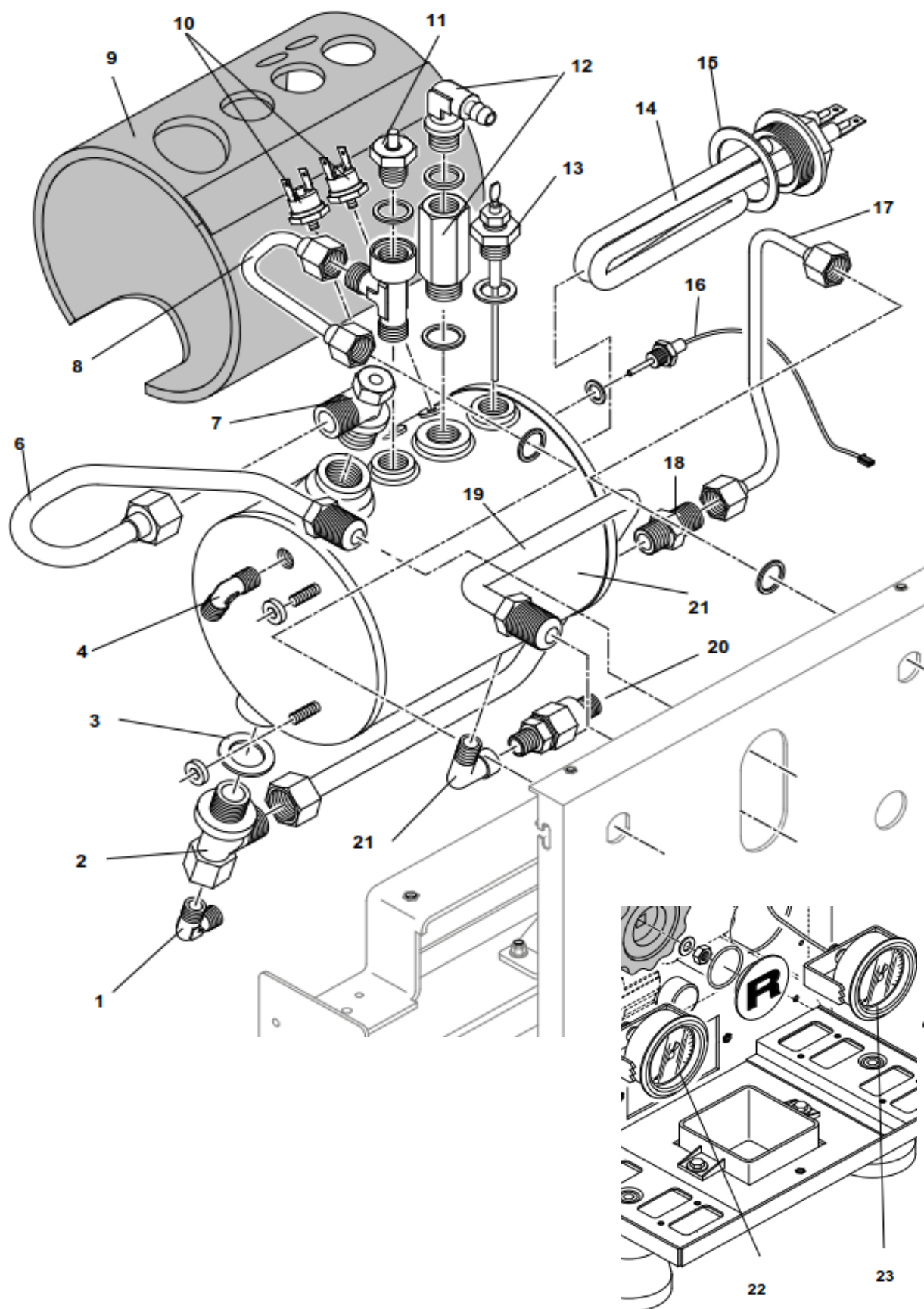
Pos.	#	Description	Notes
1	A199906055	Wiring loom (includes pos. 8)	
2	C199900957	CE Power cord	
	A199904518	IS Power cord	
	A199904616	KR Power cord	
	C199900958	UL Power cord	
	C199901115	AUS/NZ Power cord	
	C199901116	GB Power cord	
	C199901510	CH Power cord	
3	A199905505	Thermo-PID V. 230/50	
	A199905514	Thermo-PID V. 115/60	
4	A139904519	Green lamp	
5	A199906002	On-off switch	
6	A190004666	Relé SSR	
7	A190004524	Control board V.230-240 /50 - 60 Hz	
	A190004525	Control board V. 115/60	
9	A199905198	Microswitch	



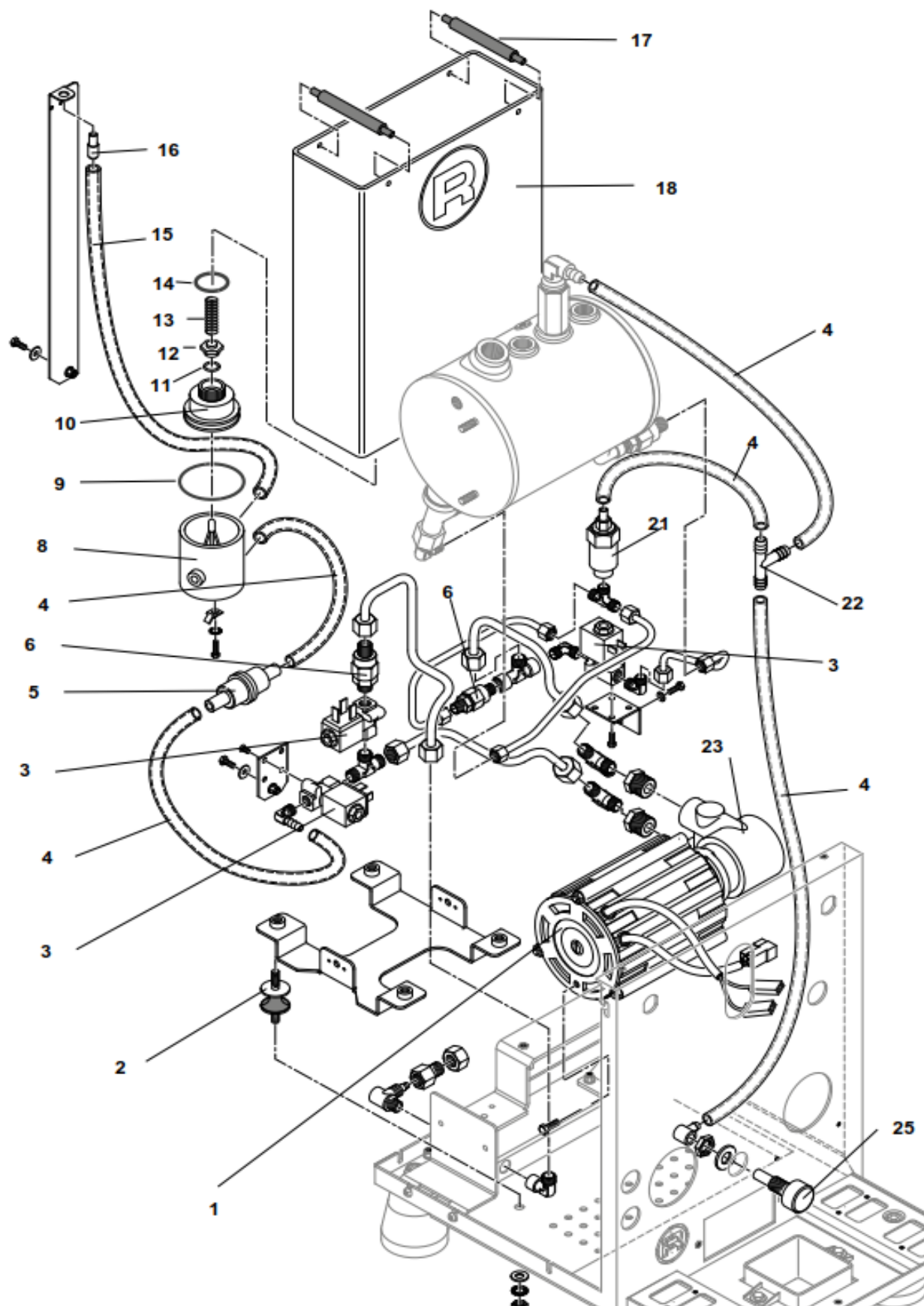
Pos.	#	Description	Notes
1	A329905087	Nut 1/4"	
2	A229905784	Valve	
3	A639905816	Handle	
4	A449904672	O-Ring	
5	A529R04649	"R" cover for steam valve handle	
6	A527704649	Cover for hot water handle	
7	A449904331	Teflon gasket	
8	A209904332	Spring	
9	A229904333	Plate	
10	C400002022	O-Ring	
11	A449904334	O-Ring	
12	C440003449	Siliconr pipe 4 x 7	
13	C400002022	O-Ring	
14	C400003008	O-Ring	
15	C227700536	Hot water nozzle	
16	R290003612	Hot water wand (complete)	
17	C440003449	Silicone pipe 4 x 7	
18	C200002839	Steam nozzle 2 holes 1,5	
19	R290003611	Steam wand (complete)	
20	R299906015	Steam wand with valve	
21	R299906016	Hot water wand with valve	
22	R229905953	Shaft	



Pos.	#	Description	Notes
1	A229904391	Rounded nut	
2	C469900420	Gasket	
3	C619900554	Filter	
4	C229900549	Restrictor 0,8	
6	C469900422	Green gasket	
7	R219905890	Spring	
8	R229905608	Valve	
9	C469900421	Teflon gasket	
10	C449900767	Gasket	
11	A319904599	Screw	
12	R229905238	Shaft	
13	R000002142	Flange	
14	C219900426	Gasket	
15	R000002143	Support	
16	C219900427	Spring	
17	R000002144	Cover	
18	C229901228	Diffuser	
19	R229905239	Valve	
20	R219905890	Spring	
21	C229901165	Cylinder	
22	R229905609	Valve	
23	R299905958	Spring	
24	R000002148	Connector	
25	C469900783	Gasket	
26	R000002149	Connector	
27	C519900103	Shower foil	
28	C449900229	Group gasket	
29	A229905448	Group complete	
30	R299905887	Cam kit	
31	C610003902	7 g filter basket	
	C610003901	14 g filterbasket	
	C619900106	Backflush cap ("blind filter")	
32	A699905020	1 cup filter holòder with basket	
	A699905021	2 cups filter holòder with basket	
33	R000002146	Pin	
34	R299905888	Lever assembly	
35	RA99905814	Ceramic group shaft	



Pos.	#	Description	Notes
1	C229900393	Injector 110 mm	
2	C229900740	Connector	
3	C479900673	Copper gasket	
4	A229904355	Connector	
6	A279905173	Inlet pipe	
7	A229904957	Connector	
8	A279904290	Steam pipe	
9	A499905058	Boiler insulation	
10	C199901550	Thermostat 135°C	
11	A219905510	Vacuum breaker valve	
12	A299904998	Safety valve	
13	C199900839	Boiler level probe	
14	C199901551	Heating element V. 230	
	C199901552	Heating element V.1115	
15	C469900239	Heating element gasket	
16	A119905081	NTC probe	
17	A229905097	Water pipe	
18	C229900520	Connector	
19	A279904289	Return pipe	
20	C229900540	Non return valve	
21	A277704278	Boiler	
22	A299905009	Boiler pressure gauge with capillary pipe	
23	A299905010	Pump pressure gauge with capillary pipe	



Pos.	#	Description	Notes
1	A199904493	Pump motor V. 220-230-240	
	A199904494	Pump motor V. 110-115	
2	A499904364	Anti-vibration absorber	
3	C190004066	Solenoid valve V. 230	
	C190004067	Solenoid valve V.115	
4	C499900769	Silicone pipe 5x8	
5	C439900695	Filter	
6	C229900540	Non return valve	
8	A439905148	Manifold	
9	A449904547	O-ring	
10	A439905146	Coupling	
11	C449900702	O-ring	
12	C430003482	Connector	
13	C019900711	Spring	
14	A449905151	O-ring	
15	C260003822	Silicone pipe 6x9	
16	C220003818	Non return connector	
17	A639904956	Water reservoir handle	
18	R899905144	Water tank complete (18+9+10+11+12+13+14)	
21	C229900911	Expansion valve	
22	C400002827	Plastic connector	
23	A299904495	Rotary pump	
25	A227704363	Connector	